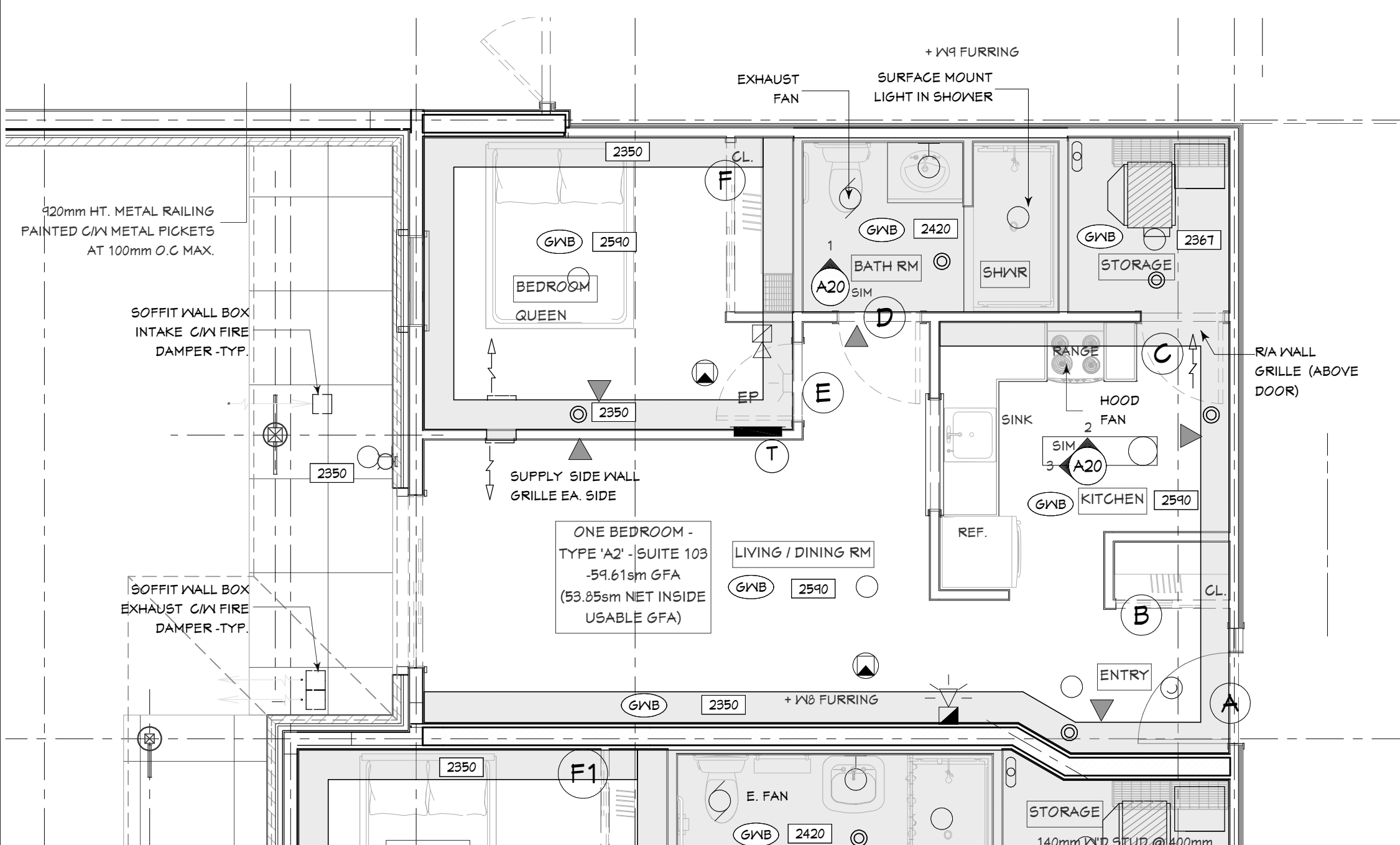
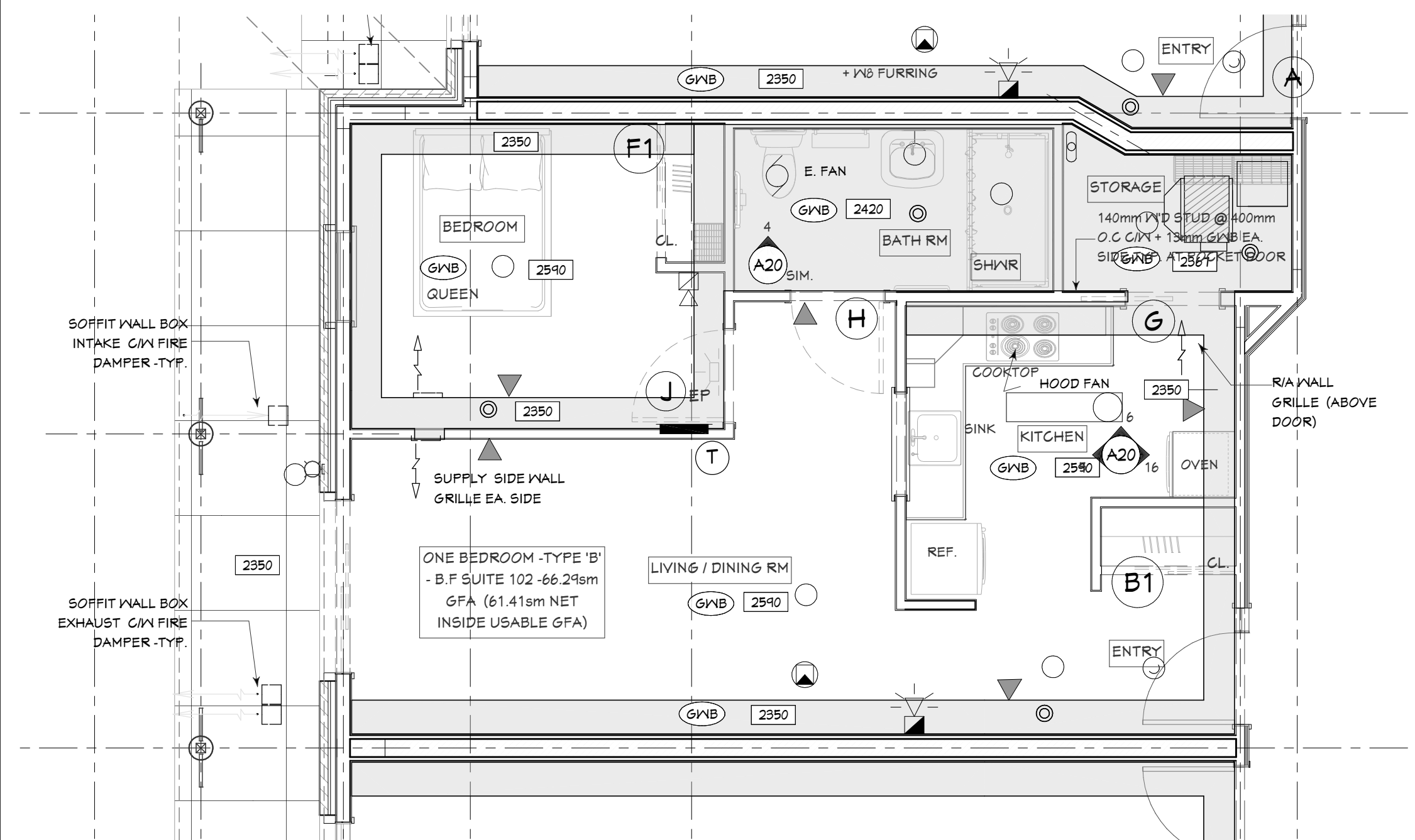


1  
A16  
PART ENLARGED RC FLOOR PLAN-TYP. ONE BEDROOM SUITE -TYPE 'A'  
1:50 (TYPICAL FOR SUITE : 104,107 REV., 204, AND 201 REV.)

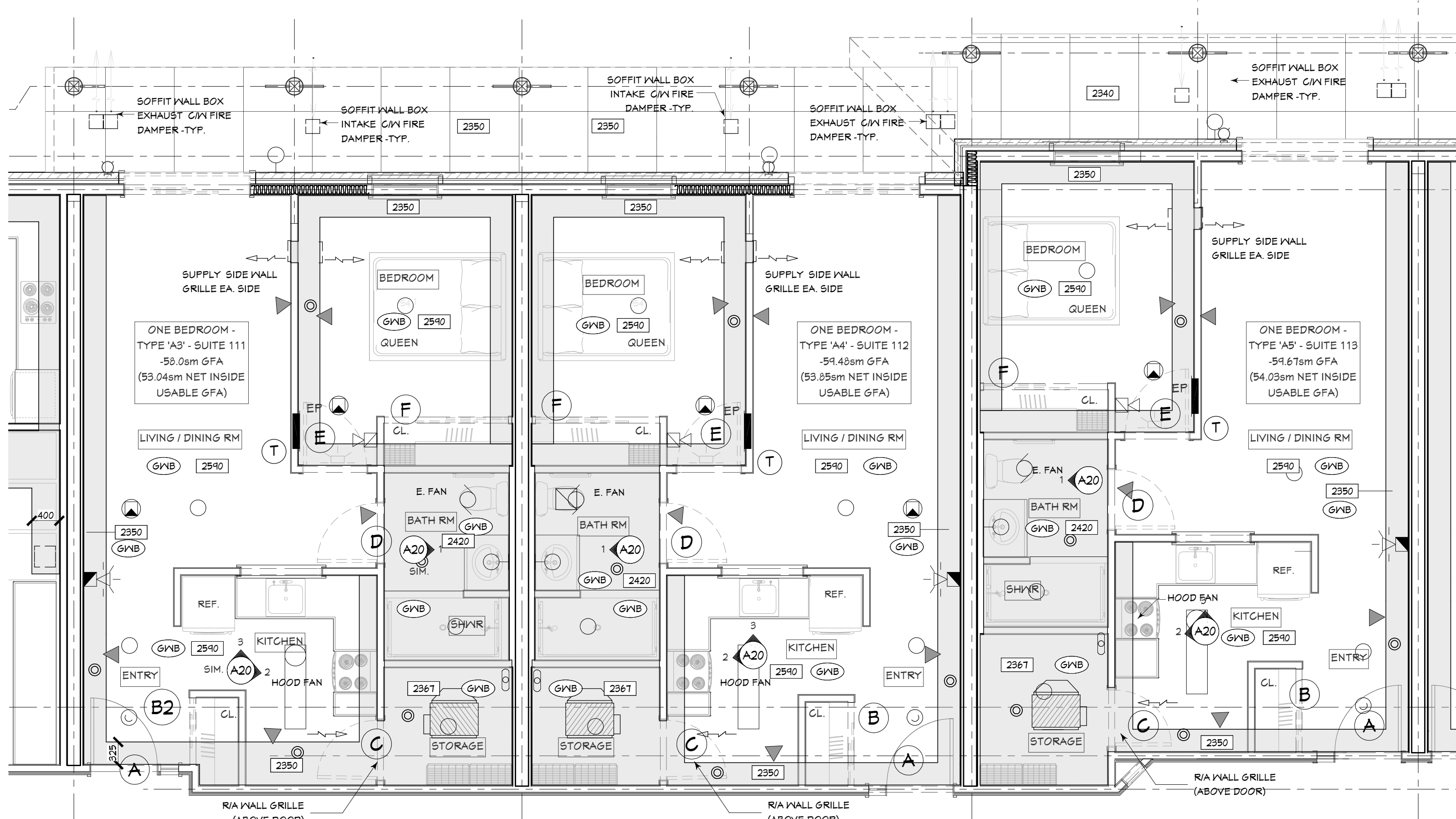
2  
A16  
PART ENLARGED RC FLOOR PLAN-TYP. ONE BEDROOM SUITE -TYPE 'A1'  
1:50 (TYPICAL FOR SUITE : 105, 106 REV., 205, AND 206 REV.)



3  
A16  
PART ENLARGED RC FLOOR PLAN-TYP. ONE BEDROOM SUITE -TYPE 'A2'  
1:50 (TYPICAL FOR SUITES : 100 REV.103, 100 REV., 200 REV., 203, AND 208 REV.)



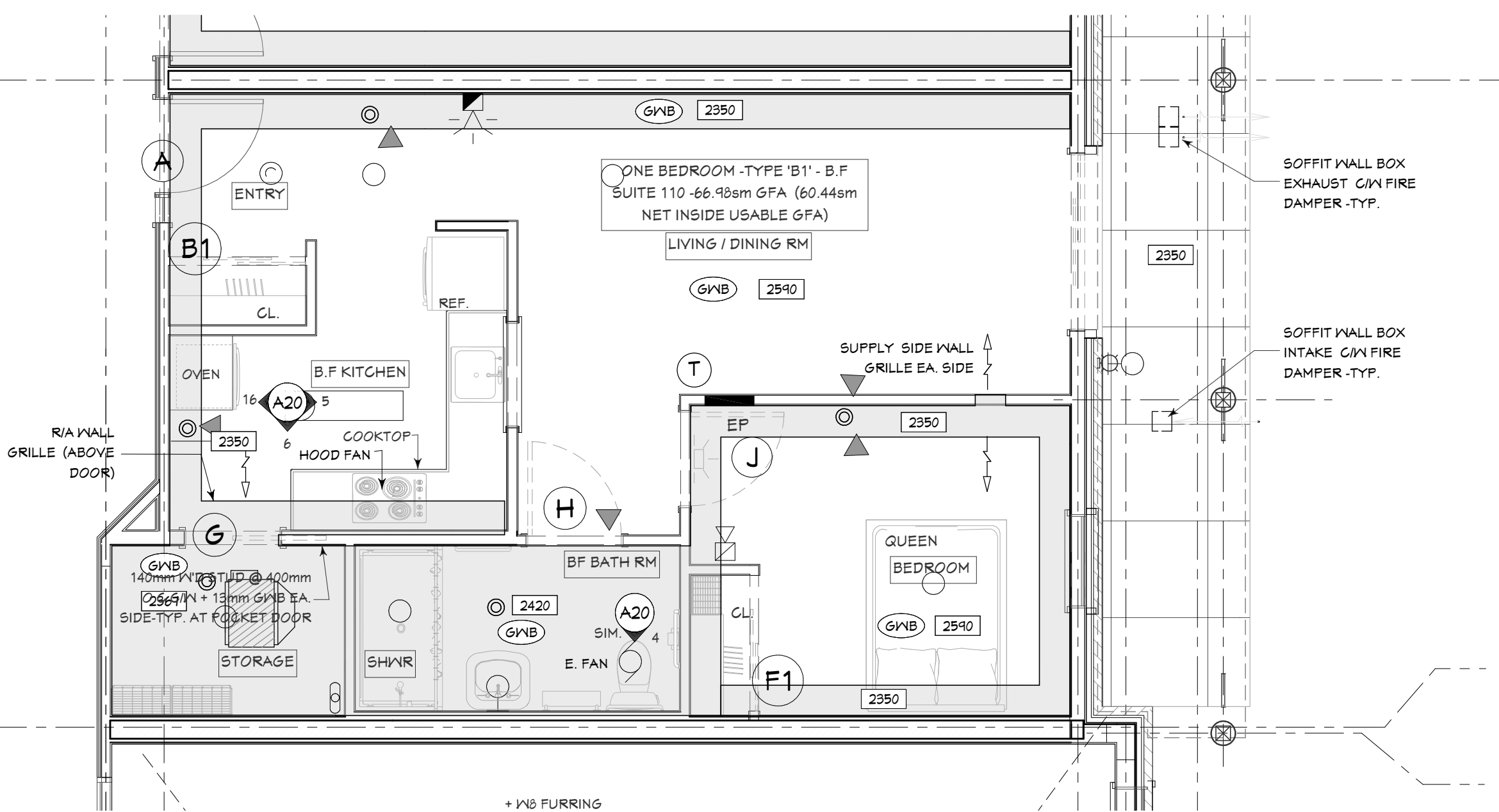
4  
A16  
PART ENLARGED RC FLOOR PLAN-TYP. ONE BEDROOM B.F SUITE -TYPE 'B'  
1:50 (TYPICAL FOR SUITE : 101 REV.,102, 104 REV., 201 REV., 202, AND 204 REV.)



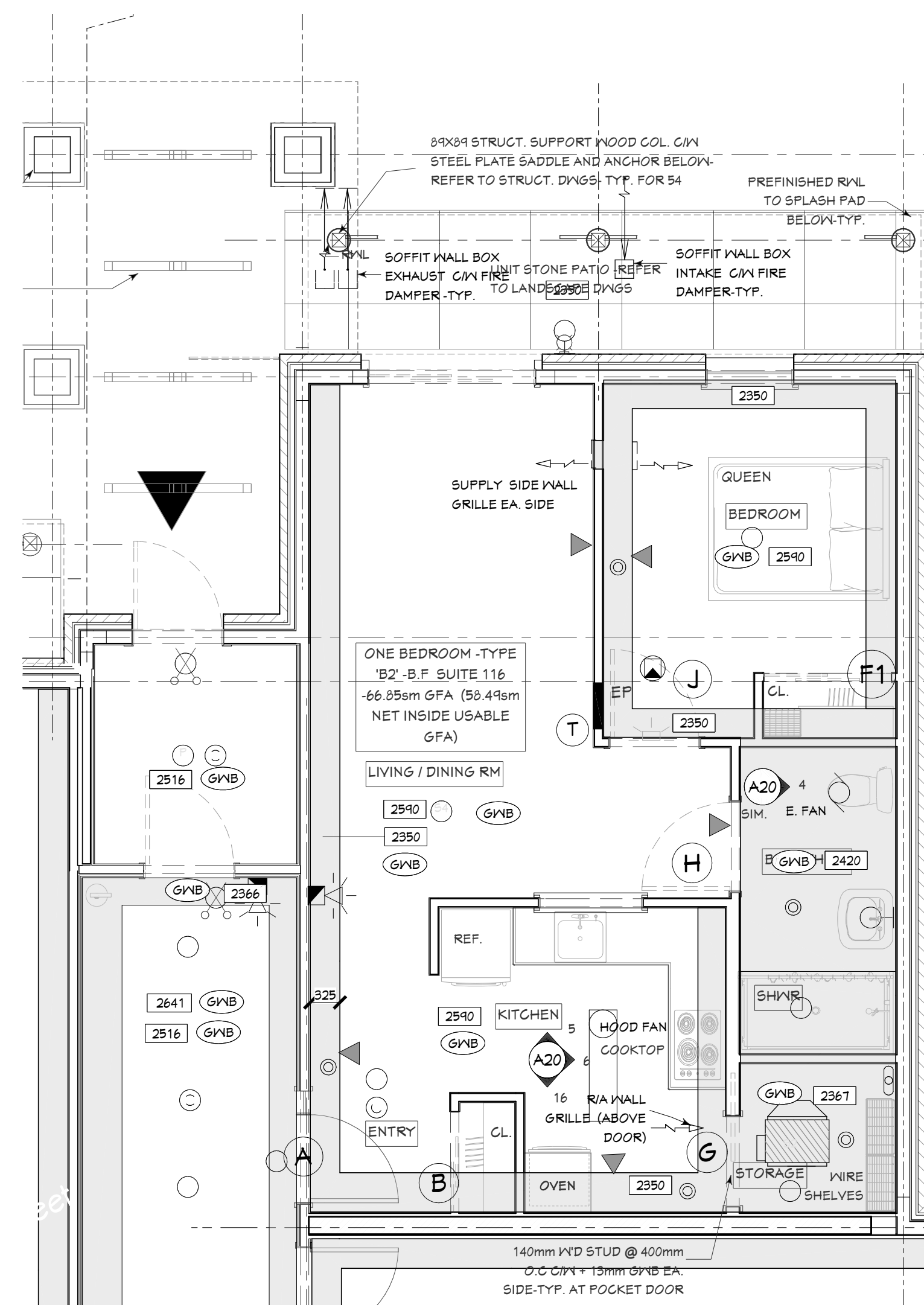
6  
A16  
PART ENLARGED RC FLOOR PLAN-TYP. ONE BEDROOM SUITE -TYPE 'A3'  
1:50 (TYPICAL FOR SUITES : 111, 123, 124, 211, 223 AND 224)

7  
A16  
PART ENLARGED RC FLOOR PLAN-TYP. ONE BEDROOM SUITE -TYPE 'A4'  
1:50 (TYPICAL FOR SUITES : 112,115,117,118, 119, 122,212, 215, 217, 218, 219,AND 222)

8  
A16  
PART ENLARGED RC FLOOR PLAN-TYP. ONE BEDROOM SUITE -TYPE 'A5'  
1:50 (TYPICAL FOR SUITES : 113,114, 120, 121, 213,214, 220, AND 221)



5  
A16  
PART ENLARGED RC FLOOR PLAN-TYP. ONE BEDROOM B.F SUITE -TYPE 'B1'  
1:50 (TYPICAL FOR SUITE : 110, AND 210 )



9  
A16  
PART ENLARGED FLOOR PLAN-TYP. ONE BEDROOM B.F SUITE -TYPE 'B2'  
1:50 (TYP. FOR SUITE : 116, & 216)

- LEGEND TO REFLECTED CEILING PLAN.  
REFER ALSO TO MECH., ELEC. & SPRINKLER DWGS
- GREEN PICTOGRAM WITH OR WITHOUT WHITE GRAPHIC DIRECTIONAL SYMBOL
  - SINGLE OR DOUBLE REMOTE LED LAMP HEAD. CEILING OR WALL MOUNTED TO SUIT.
  - SELF CONTAIN EXIT LIGHT, 12 HOUR BATTERY, LUMACELL GREEN PICTOGRAM
  - BATTERY BACK UP UNIT.
  - WALL OR CEILING MOUNT LIGHTING REFER TO ELEC. DWGS
  - HEAT DETECTOR
  - FIRE ALARM PULL STATION
  - FIRE ALARM HORN OR SPEAKER
  - FIRE ALARM BELL
  - FIRE ALARM HORN/STROBE
  - FIRE ALARM STROBE
  - IN SUITE SILENCING DEVICE
  - SMOKE DETECTOR
  - SMOKE DETECTOR W/ DOUBLE CONTACTS
  - STAND ALONE TYPE SMOKE ALARM
  - CARBON MONOXIDE DETECTOR
  - COMBINATION SMOKE ALARM/CARBON MONOXIDE DETECTOR
  - (UPRT) UPRIGHT SPRINKLER
  - (PEN) PENDENT SPRINKLER
  - (SW) SIDE WALL SPRINKLER REFER TO SPRINKLER DWGS
  - THERMOSTAT

NO.	REVISIONS	DATE	BY
4	ISSUED FOR CONSTRUCTION	JAN. 31/18	GN
3	ISSUED FOR TENDER AND BUILDING PERMIT-TOWN OF BROCK	JULY 13/18	GN
2	REVISION TO SUITE LAYOUT 216	MAY 30/18	GN
1	ISSUED FOR COORDINATION	MAY 22/18	GN

"ALL DRAWINGS, SPECIFICATIONS AND RELATED DOCUMENTS ARE THE COPYRIGHT PROPERTY OF THE ARCHITECT AND MUST BE RETURNED UPON REQUEST. REPRODUCTION OF DRAWINGS, SPECIFICATIONS AND RELATED DOCUMENTS IN PART OR WHOLE IS FORBIDDEN WITHOUT THE ARCHITECT'S WRITTEN PERMISSION". DRAWINGS SHALL NOT BE SCALED

CONTRACTOR MUST CHECK AND VERIFY ALL DIMENSIONS ON THE JOB

**NATALE ARCHITECT INC.**

Suite 218  
2448 Dundas St. West  
Brampton, Ontario  
M6S 4G3

Tel: (416) 233-0287  
Fax: (416) 233-0287

ONTARIO ASSOCIATION OF ARCHITECTS  
GN/NATALE  
LICENCE 4184  
JAN 31/18

PROJECT:  
NEW 2 STOREY BUILDING:  
SENIORS RESIDENCE  
100 MCKAY STREET  
CANNINGTON, ONTARIO

DRAWING:  
ENLARGED RC FLOOR PLANS-  
ONE BEDROOM SUITE TYPES

THIS DRAWING SHALL NOT BE USED FOR CONSTRUCTION UNLESS COUNTERSIGNED BY:

DRAWN BY: mm	CHECKED BY: GN
DATE AUG. 2017	SCALE AS NOTED
PROJECT No.	DRAWING No.

16-16 A16